

Operating manual

Model: LEST-701

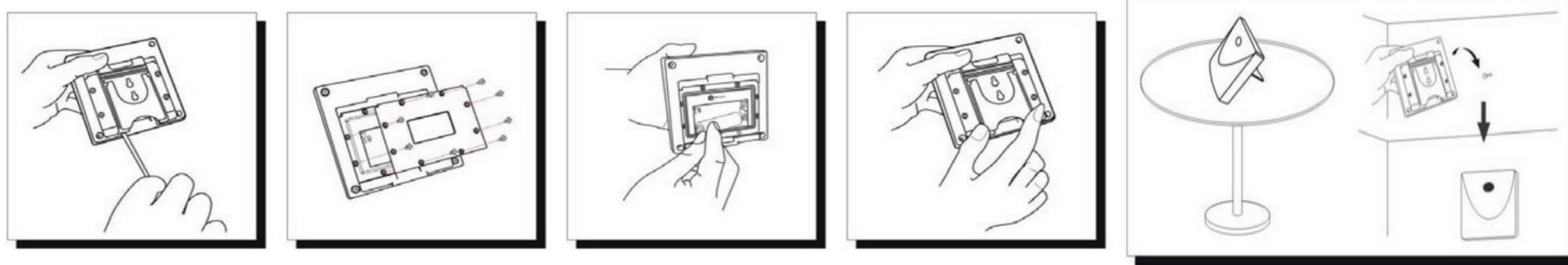
Wireless Extender Device

Characteristics:

- LEST-701 is an extender of RF remote control device.
- LEST-701 extends RF transmission distance (between transmitter and receiver) at least 30 meters in open field.
- Suitable for remote receiving in the corner or longer transmitting and receiving distance.
- IP 56 waterproof certified plastic enclosure housing.
- DC type battery operated. Long battery life (12 months).

Installation:

- Use “-” minus type screwdriver to take off the hook.
- Use screwdriver to open the battery compartment door (8 screws off).
- Put in 2 * AA 1.5V Alkaline battery (excluded ex-factory).
- LED light on for 1 sec. then light off entering STAND BY mode.
- Learn the code with transmitter. (Code learning, please refer to **Program** paragraph).
- Close the battery compartment door with screws (waterproof concern).
- Mount back the hook.
- Hang LEST-701 to the wall or stand on the desk where it is as an extender for lengthening transmission distance between transmitter and receiver.

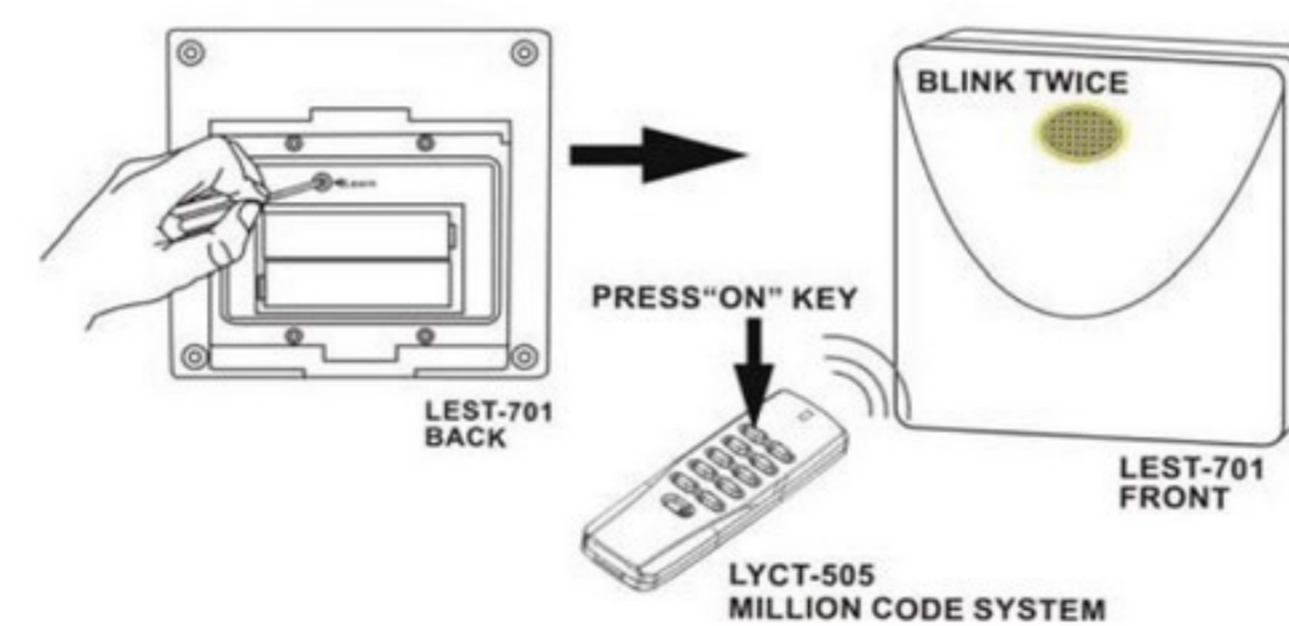


Program:

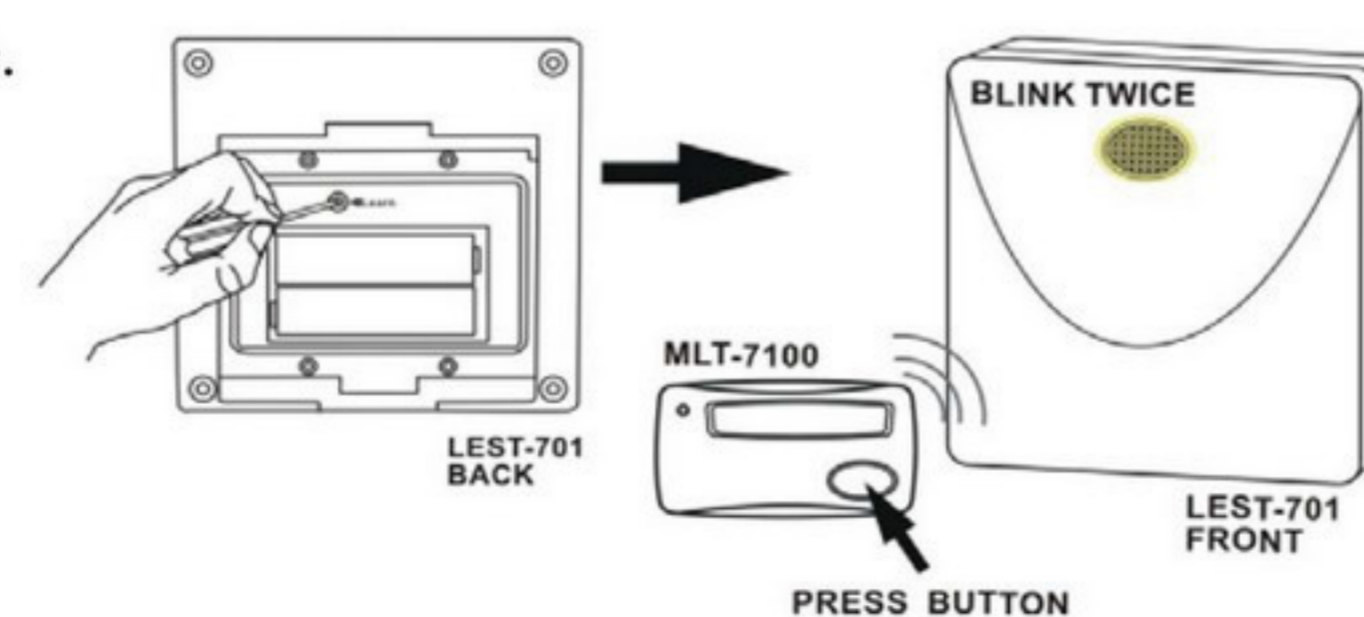
Code Setting

- Insert battery, LEST-701 LED will light on for 1 sec. then light off entering STAND BY mode.
- Press “Learn” button, LEST-701 LED will blink (quicker).
- Press transmitter “ON” key which is going to be programmed.
- LEST-701 LED blinks twice (slower) for confirmation of setting.
- Total 6 self program code memories of LEST-701. Repeat setting steps 2~4 to program the available memory spaces.

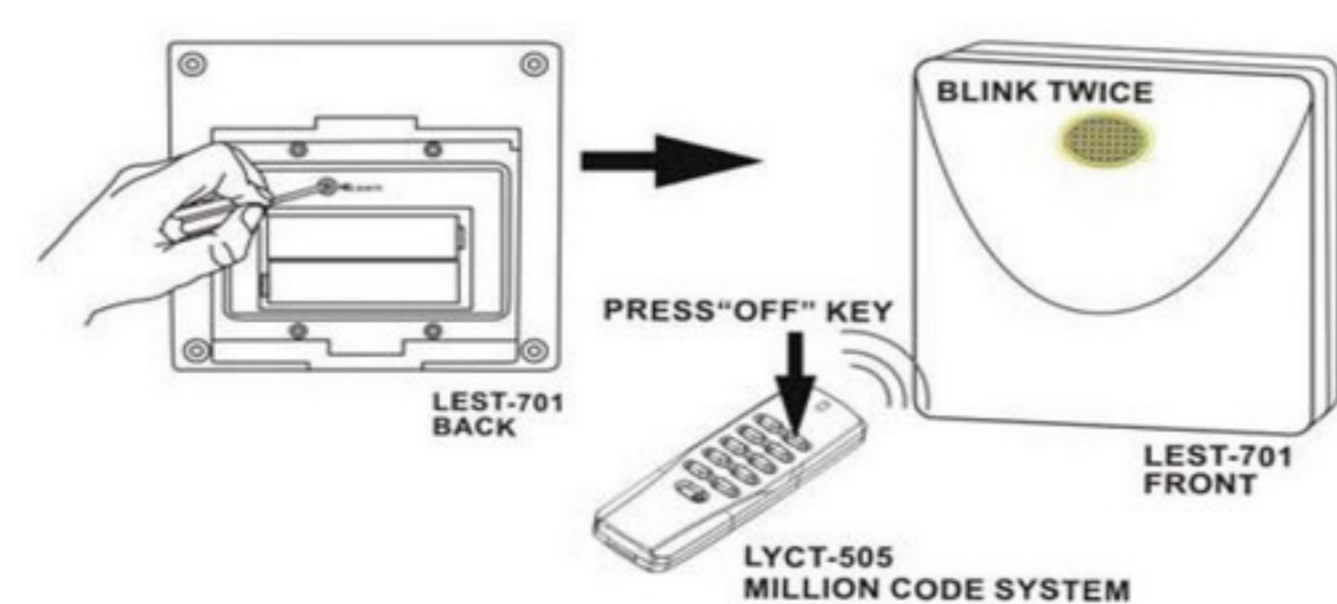
SET MEMORIZED CODE



SET MEMORIZED CODE



DELETE SINGLE PROGRAMMED CODE



Code Deletion

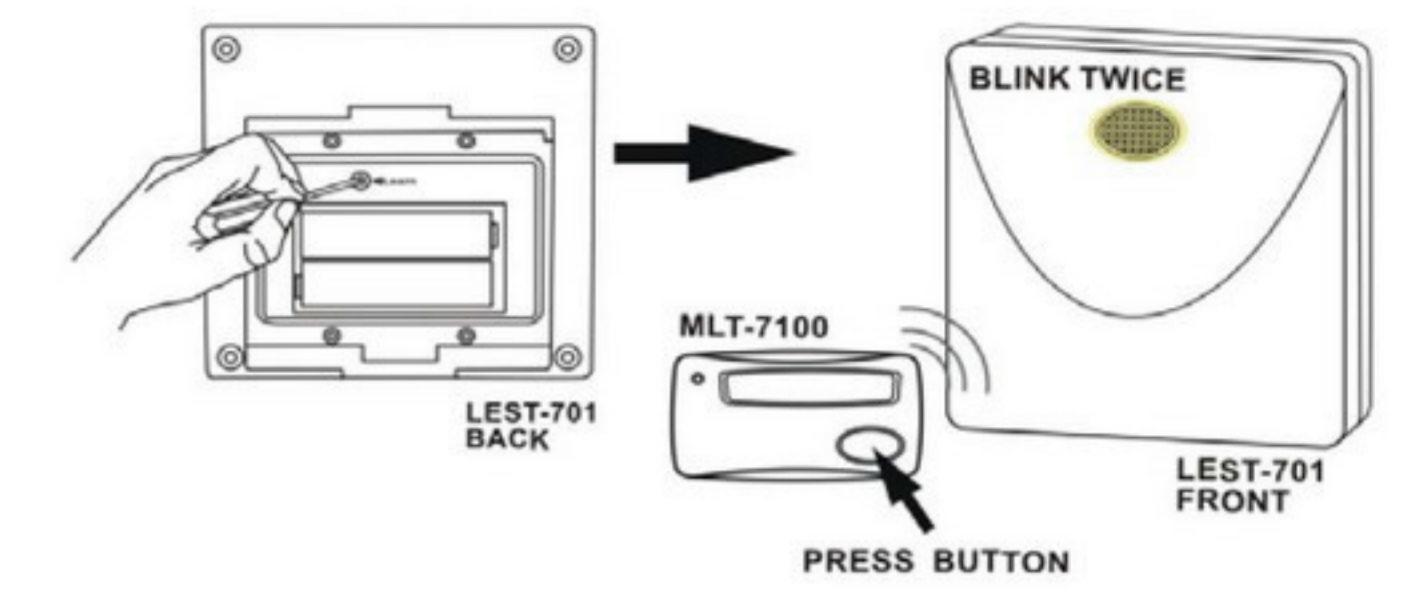
Single memory

- Press “Learn” button, LEST-701 LED will blink (quicker).
- Press transmitter “OFF” key which is going to be deleted.
- LEST-701 LED blinks twice (slower) for confirmation of deletion.

Single memory (for door chime)

- Press “Learn” button, LEST-701 LED will blink (quicker).
- Press door chime button which is going to be deleted.
- LEST-701 LED blinks twice (slower) for confirmation of deletion.

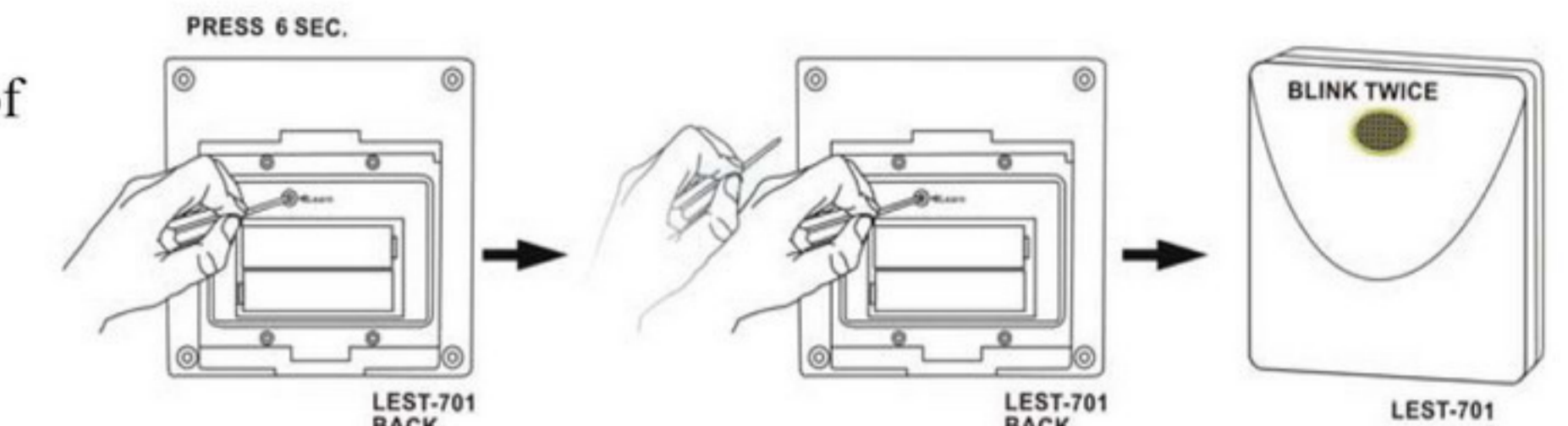
DELETE SINGLE PROGRAMMED CODE



All memories

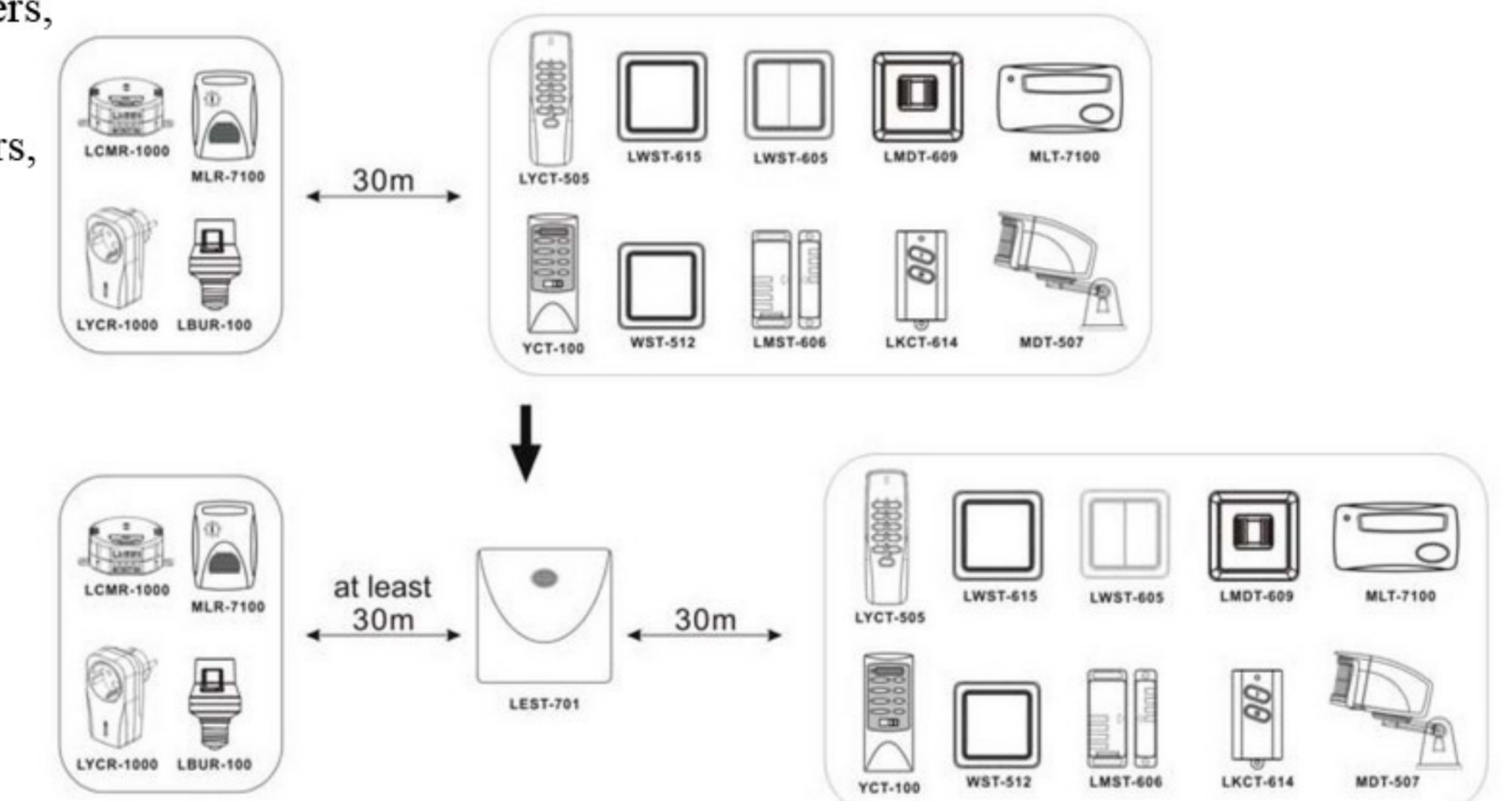
- Press “Learn” button of LEST-701 for 6 sec., LED blinks (quicker).
- Release “Learn” button.
- Press again “Learn” button, LED blinks twice (slower) for confirmation of deletion of all 6 memories.

DELETE “6” MEMORIZED CODE



Compatible products (models):

- LEST-701 works compatible with all KAPPA self program type receivers, but NOT DIMMER models (LCMR-300,LYCR-300,LWMR-210).
- LEST-701 works compatible with all KAPPA code switch type receivers, such like:
Transmitter: YCT-100, WST-512, TMT-502, KCT-510, MDT-403, MLT-7100
Receiver: CMR-1000, YCR-1000, MLR-7100, MLR-8300, WSR-1000
But NOT DIMMER models (CMR-300, YCR-300, HDR-105)
- All KAPPA products compatibility:
self program transmitter ----linkable----**self program receiver**
code switch type transmitter---linkable--- **self program receiver**
code switch type transmitter--linkable--**code switch type receiver**



Specification:

- RF frequency: 433.92MHz
- Battery operated: AA (1.5V) alkaline x 2 pieces (excluded ex-factory)
- 2 screws for hook wall mount included ex-factory
- IP 56

Notice:

- More than 1 piece LEST-701 with same learned code is restrict in an environment to prevent more than 1 piece LEST-701 sending code to each other continuously.
- LEST-701 LED continuously blinking each 3 sec. is low battery till drained of battery current for at least 7 days then LED stops blinking. Please replace fresh batteries before current drains.
- LEST-701 is suggested to be installed in the place where transmission between transmitter and receiver is unreachable. Thus, LEST-701 can play the role of extender to extend code from transmitter to receiver. Otherwise, if LEST-701 installed in the place where transmission between transmitter and receiver is reachable, LEST-701 is not playing its optimal efficiency and this occupies a memory availability from limited memories spaces of LEST-701 (total 6 self program code memories).
- If LEST-701 is installed in the range that transmission between transmitter and receiver is reachable, receiver can catch the code from transmitter and from LEST-701. Auto correction design is made in LEST-701 software. Receiver will only respond once not twice after receiving code from transmitter and LEST-701.