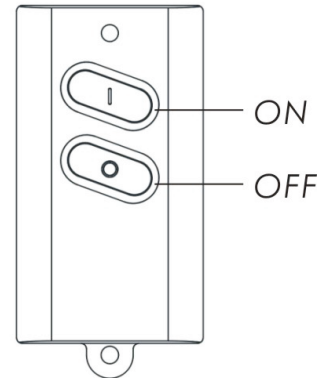


## Wireless Remote Keychain

**MODEL: LKCT - 614**

Compact ON/OFF remote keychain.

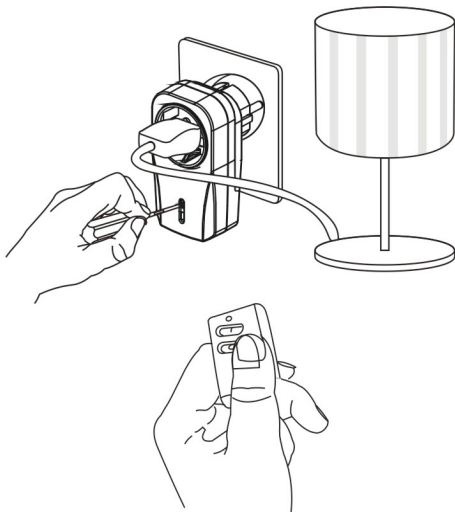


### How to link code

- Connect power to receiver
- Bring keychain remote near receiver, push once the self learning button enter learning mode.  
While in learning mode, the LED on receiver will flash to indicate ready for programming.
- Then on keychain remote press '**ON**' button once, the receiver will flash twice to indicate programming is confirmed and completed.

•

! During leaning mode if within 10 seconds no signal is detected it will automatically return to stand-by mode.

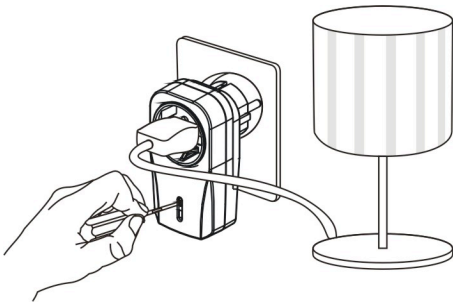


To delete code:

- Bring keychain remote near receiver, push once the self learning button on receiver, this will enter learning / deleting mode.  
While in learning / deleting mode, the receiver LED will flash to indicate ready for deleting.
- Then on keychain remote press '**OFF**' button once, the LED on receiver will flash to indicate programmed code is deleted.

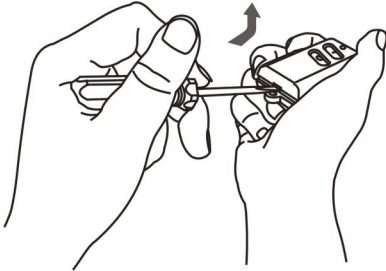
To delete all code:

- On receiver hold down the self learning button on receiver for 6 seconds, this will enter learning / deleting mode.  
While in learning / deleting mode, the receiver will flash to indicate ready for deleting.
- Then press again the self learning button, the LED on receiver will flash to indicate all code is deleted.

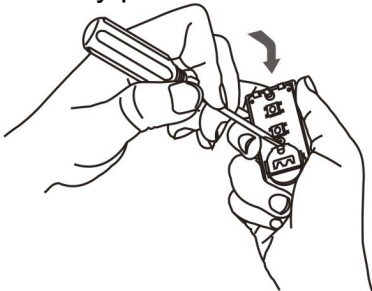


### **Battery Change**

- Insert a small flat headed screw driver and twist open.



- Gently push out the battery.



- Replace the 'CR2032' battery, making sure the '+' positive terminal is facing up.
- Close the back cabinet making sure a click sound is heard.

### **Trouble Shooting**

- Check if the battery is inserted correctly or replace with a fresh battery.

### **Specifications**

Frequency : 433.92 MHz  
Battery : 1 x Lithium battery 3V CR2032